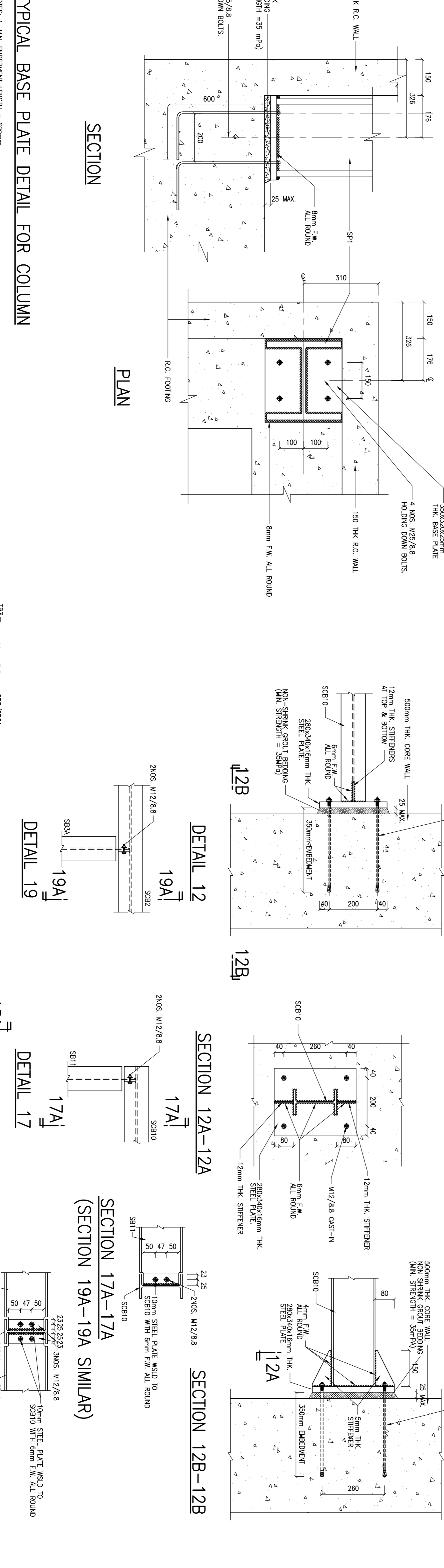
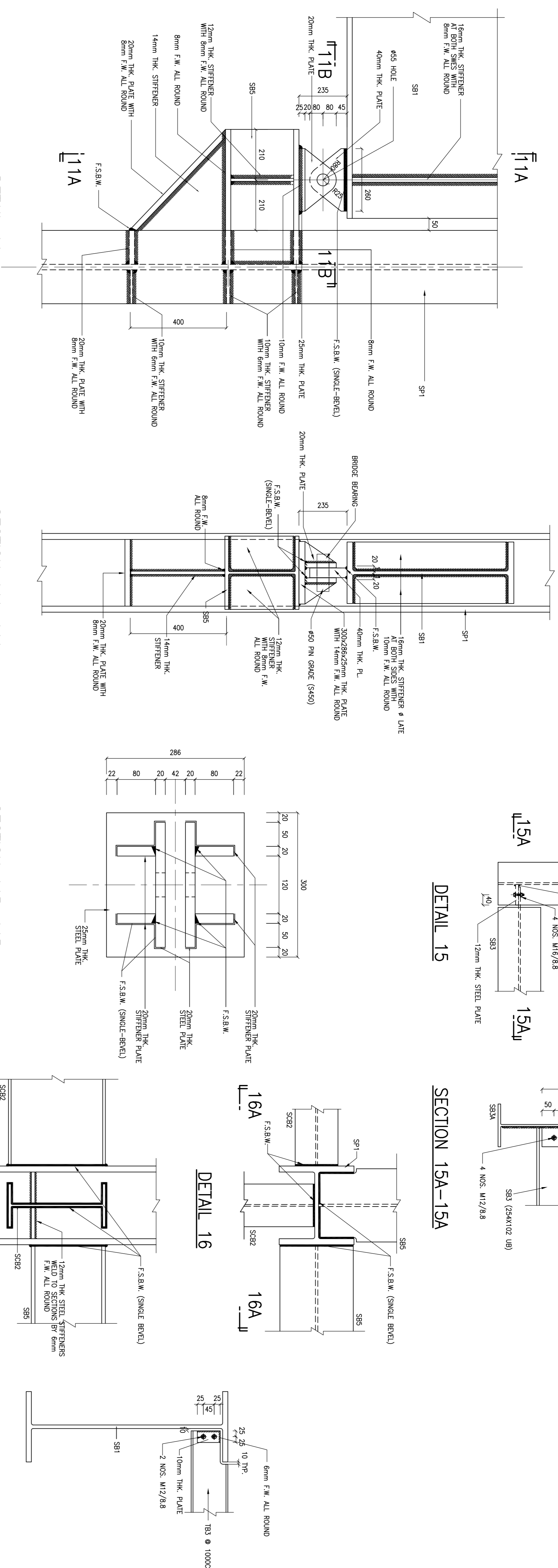


NOTE:
GENERAL NOTES SHALL REFER TO DRAWING SE/2263/1-P001.



TYPICAL BASE PLATE DETAIL FOR COLUMN

NOTES: 1. MIN. EMBEDMENT LENGTH = 600mm

TYPICAL CONNECTION DESIGN BETWEEN SB5/SB3A AND TB3

TYPICAL CONNECTION DETAIL BETWEEN SB1 AND TB3

<p>NOTE: GENERAL NOTES SHALL REFER TO DRAWING SE/2263/1-P001.</p>			
No.	Date	Description	Initial
	09/01/12	TENDER DRAWING	
<p>Revision</p>			
<p>Architect ARTHUR C. S. KWOK ARCHITECTS & ASSOCIATES LIMITED 郭定輝建築師有限公司 1401 AGRILE CENTRE ONE KOWLOON</p>			
<p>Engineer TEAM 73 HK Limited Urban Design, Urban Planning, Landscape Architecture 7/F, One King Wing Tower, 3, Yee Hong Road, Kowloon Tel: (852) 2411 1111 Fax: (852) 2411 1110 Email: team73@team73.com.hk</p>			
<p>Engineer CANVEST CONSULTANTS LIMITED CIVIL & STRUCTURAL ENGINEERS 香港測量師學會會員 15/F, 633 KING'S ROAD, NORTH POINT, HONG KONG TEL: (852) 2892 1126 FAX: (852) 2881 6385 E-MAIL: canvest@canvestbd.com.hk</p>			
Designed	FRANKIE YUEN	10/2009	
Drawn	BAN WONG	10/2009	
Checked	RICKY WONG	10/2009	
Approved			
Chief structural engineer			
Senior structural engineer			
Project engineer			
Contract No.	9AS0222	Signed	Date
File No.	8165		
Project No.	420 RO		
<p>Contract LOCAL OPEN SPACE AT CHUNG YEE STREET, KOWLOON CITY DISTRICT</p>			
<p>Drawing Title PROPOSED LIFT TOWER AND FOOTBRIDGE - DETAILS</p>			
Drawing No.	SE/2263/NTM009	Scale	1 : 10
file name:			

ARCHITECTURAL SERVICES DEPARTMENT