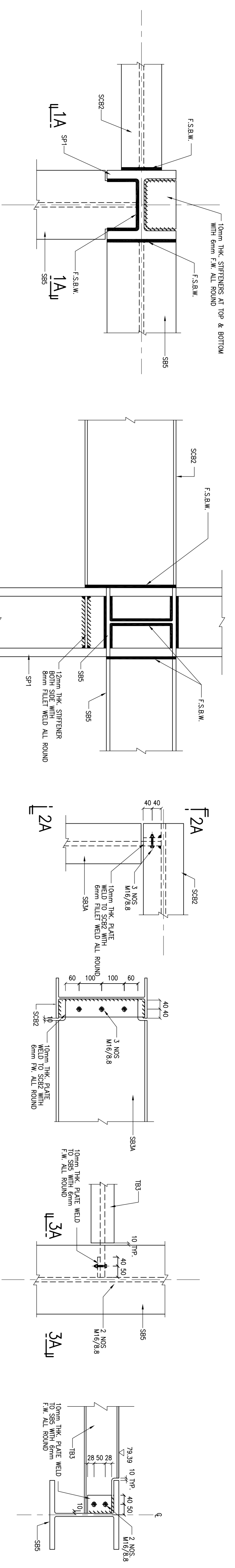


NOTE:
GENERAL NOTES SHALL REFER TO DRAWING SE/2263/J/P001.



DETAIL 1

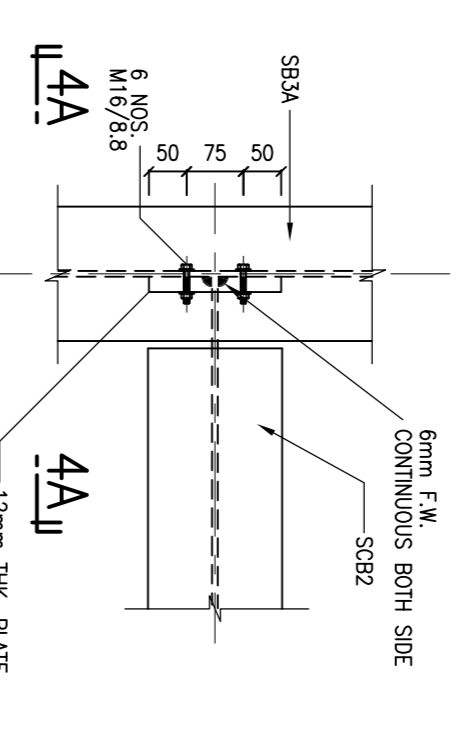
SECTION 1A-1A

DETAIL 2

SECTION 2A-2A

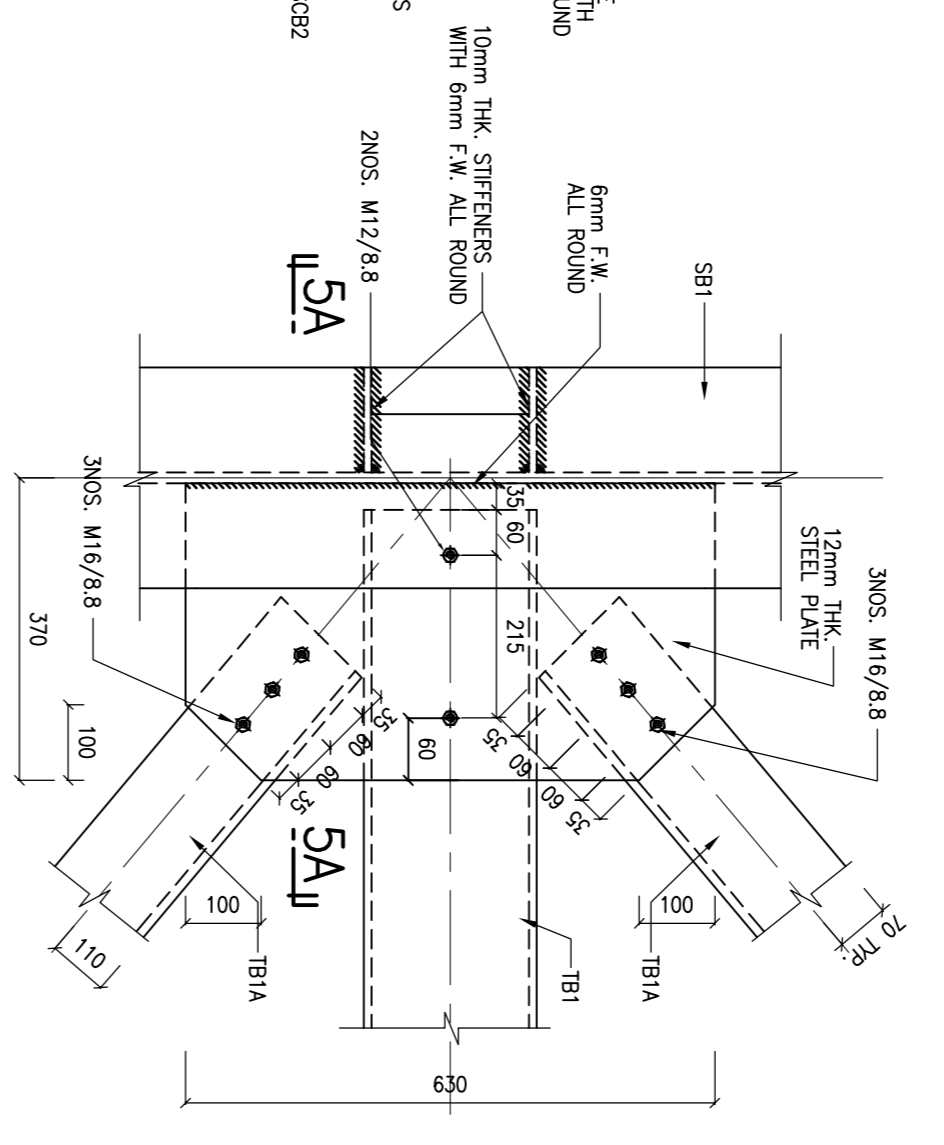
DETAIL 3

SECTION 3A-3A



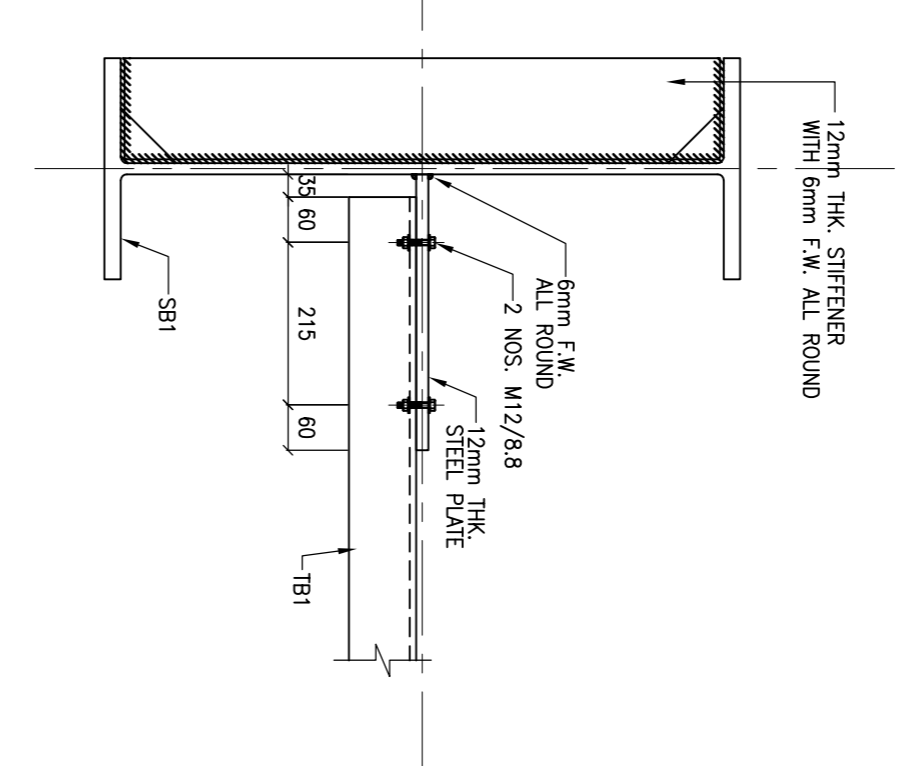
DETAIL 4

SECTION 4A-4A



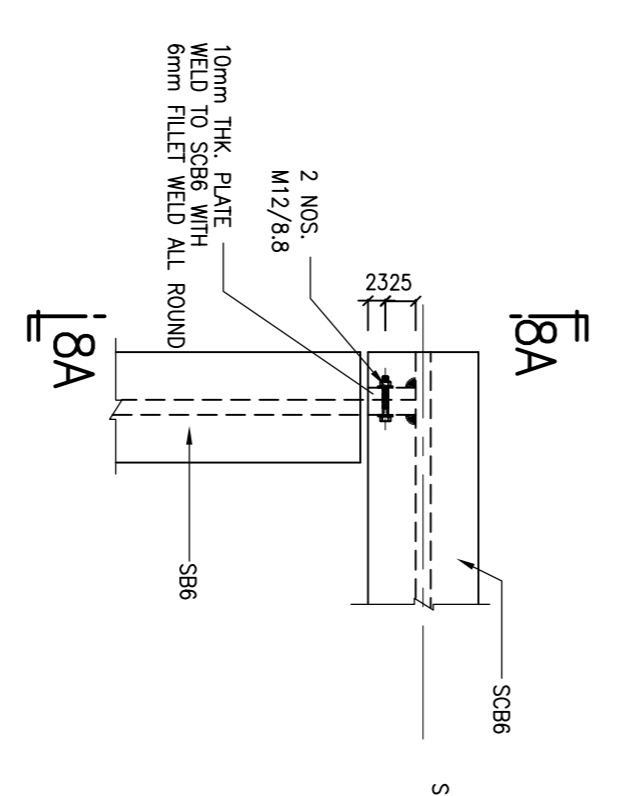
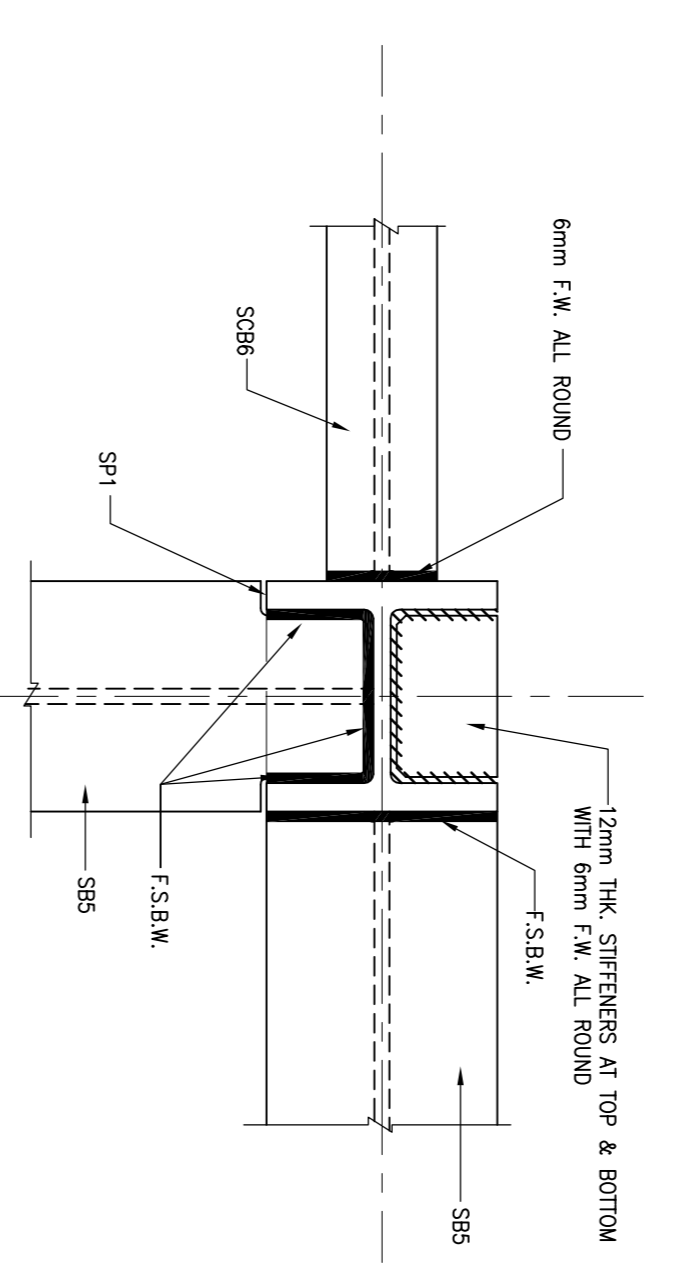
DETAIL 5

SECTION 5A-5A



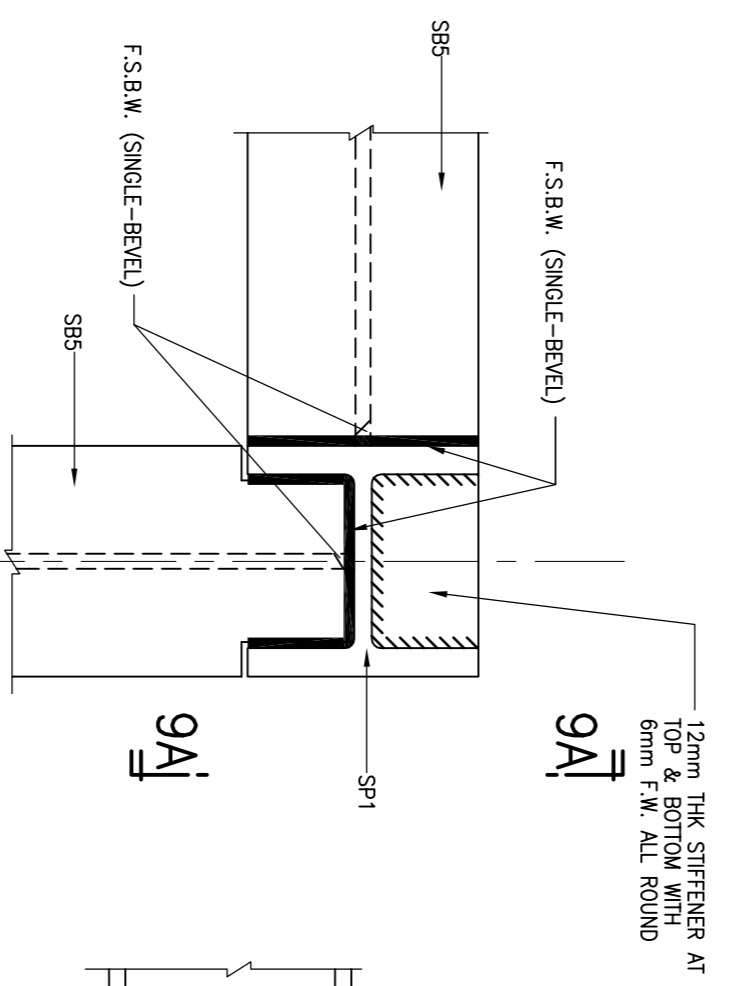
DETAIL 6

DETAIL 7 (DETAIL 13 SIMILAR)



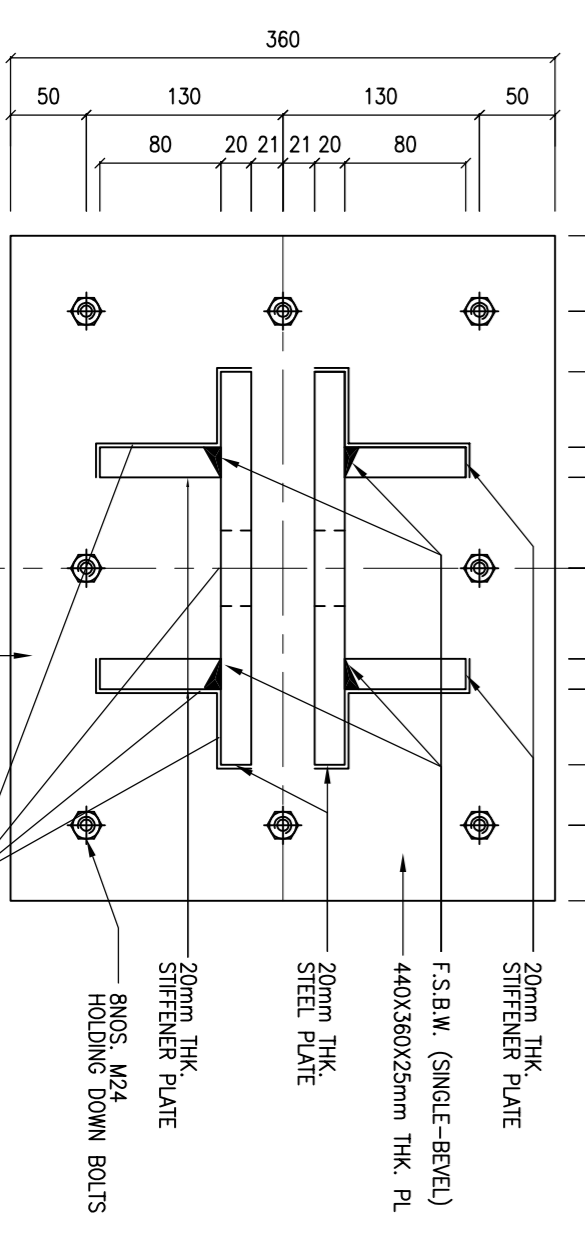
DETAIL 8 (DETAIL 14 SIMILAR)

SECTION 8A-8A



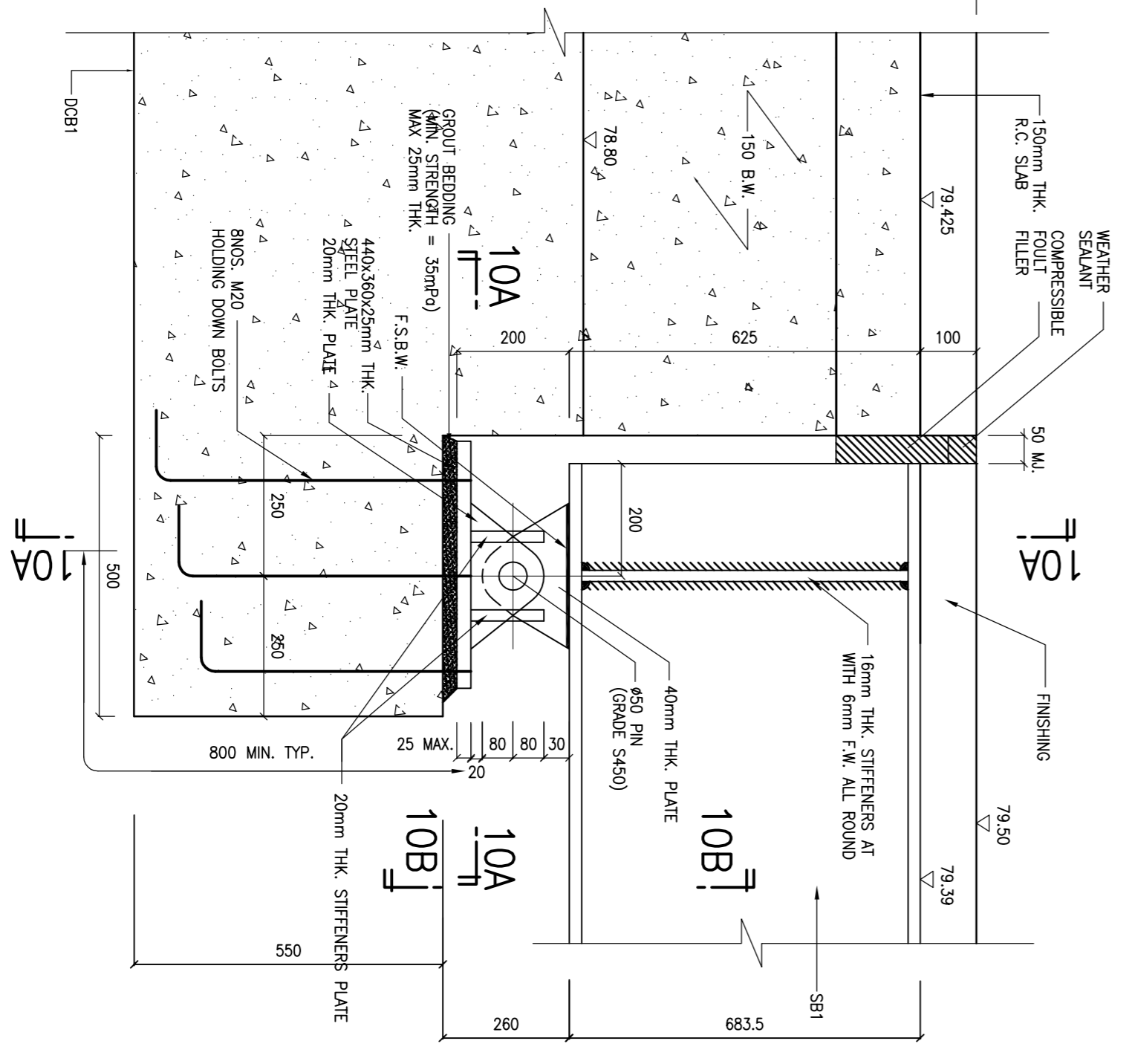
DETAIL 9 (DETAIL 21 SIMILAR)

SECTION 9A-9A



SECTION 8A-8A

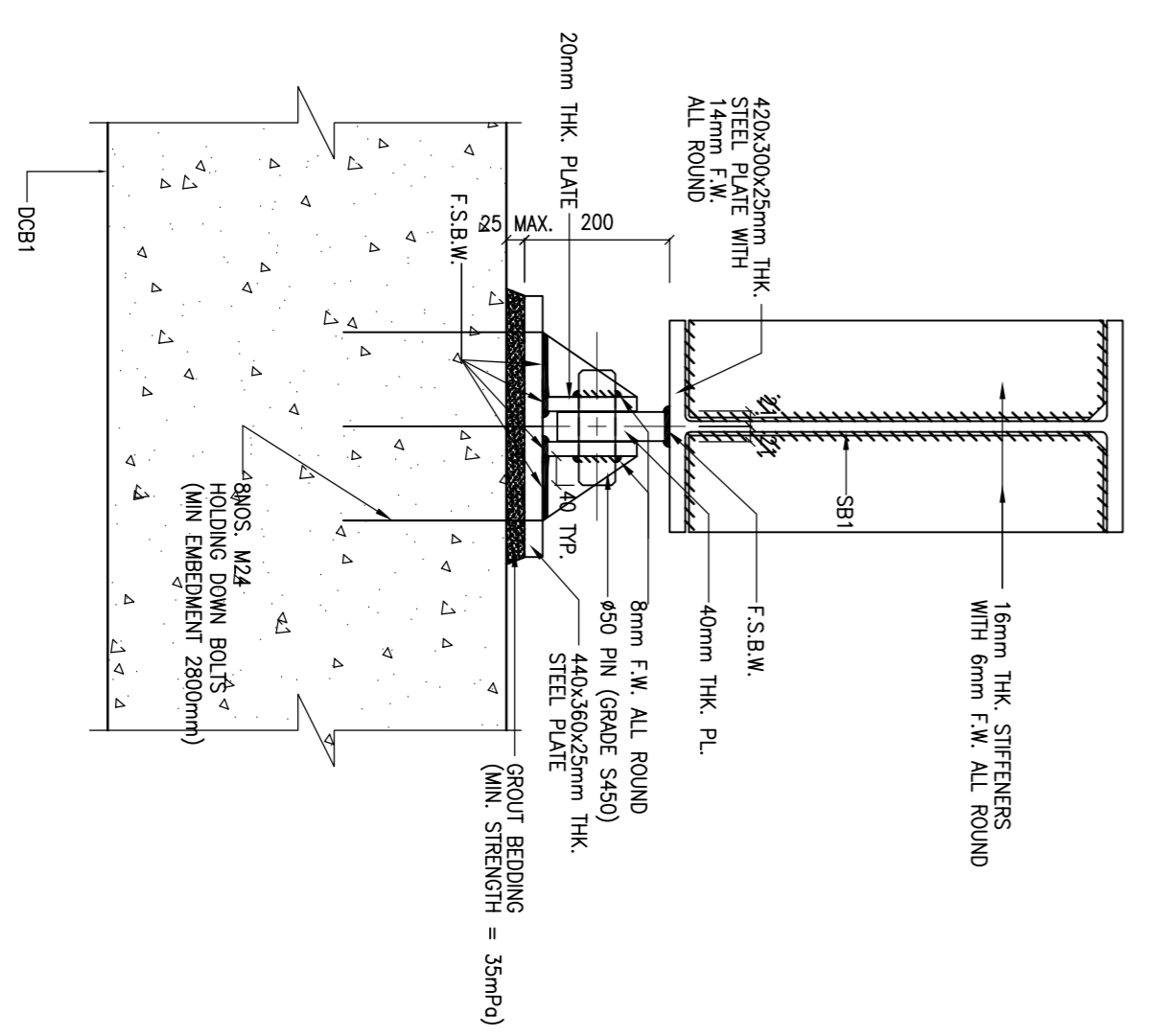
SECTION 10A-10A



DETAIL 10

CONNECTION PLATE SHALL BE GRADE S355 JR

SECTION 10B-10B



05/07/12	TENDER DRAWING	
No.	Date	Description
Revision		
Architect		
ARTHUR C. S. KWOK ARCHITECTS & ASSOCIATES LIMITED 郭定偉建築師有限公司 KOWLOON 1401 ARGYLE CENTRE ONE		
Engineer		
CANVEST CONSULTANTS LIMITED 榮達建築師有限公司 15/F, 633 KING'S ROAD, NORTH POINT, HONG KONG TEL: (852) 2882 1126 FAX: (852) 2881 6365 E-MAIL: canvest@canvestbd.com.hk		
Designed	FRANKIE YUEN	10/2009
Drawn	BAN WONG	10/2009
Checked	RICKY WONG	10/2009
Approved		
Chief structural engineer		
Senior structural engineer		
Project engineer		
Contract No.	9AS0222	Signed Date
File No.	8165	
Project No.	420 RO	
Contract		
LOCAL OPEN SPACE AT CHUING YEE STREET, KOWLOON CITY DISTRICT		
Drawing Title		
PROPOSED LIFT TOWER AND FOOTBRIDGE - DETAILS		
(SHEET 1 OF 2)		
Drawing No.	SE/2263/NTM008	Scale
file name		1 : 10

