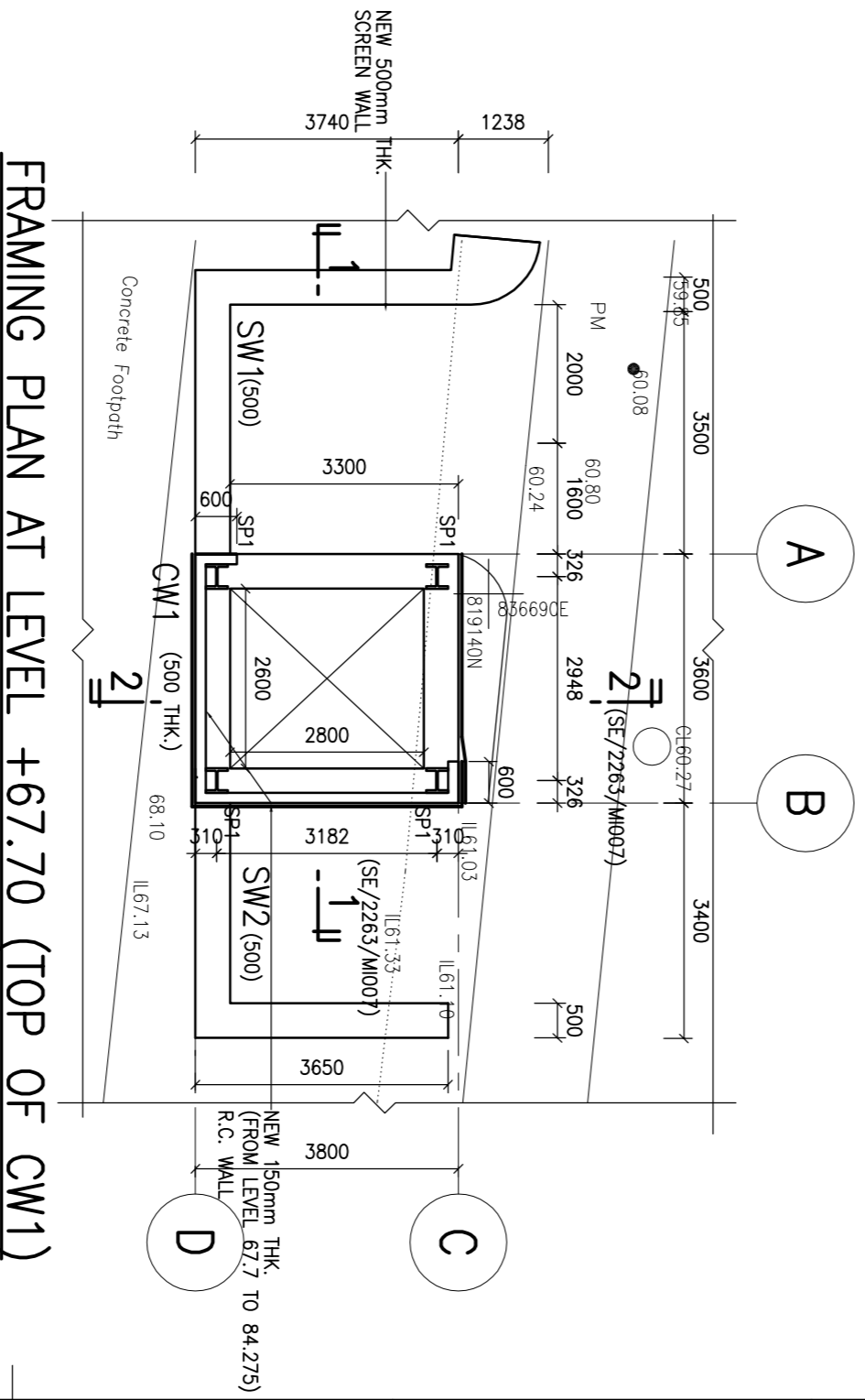
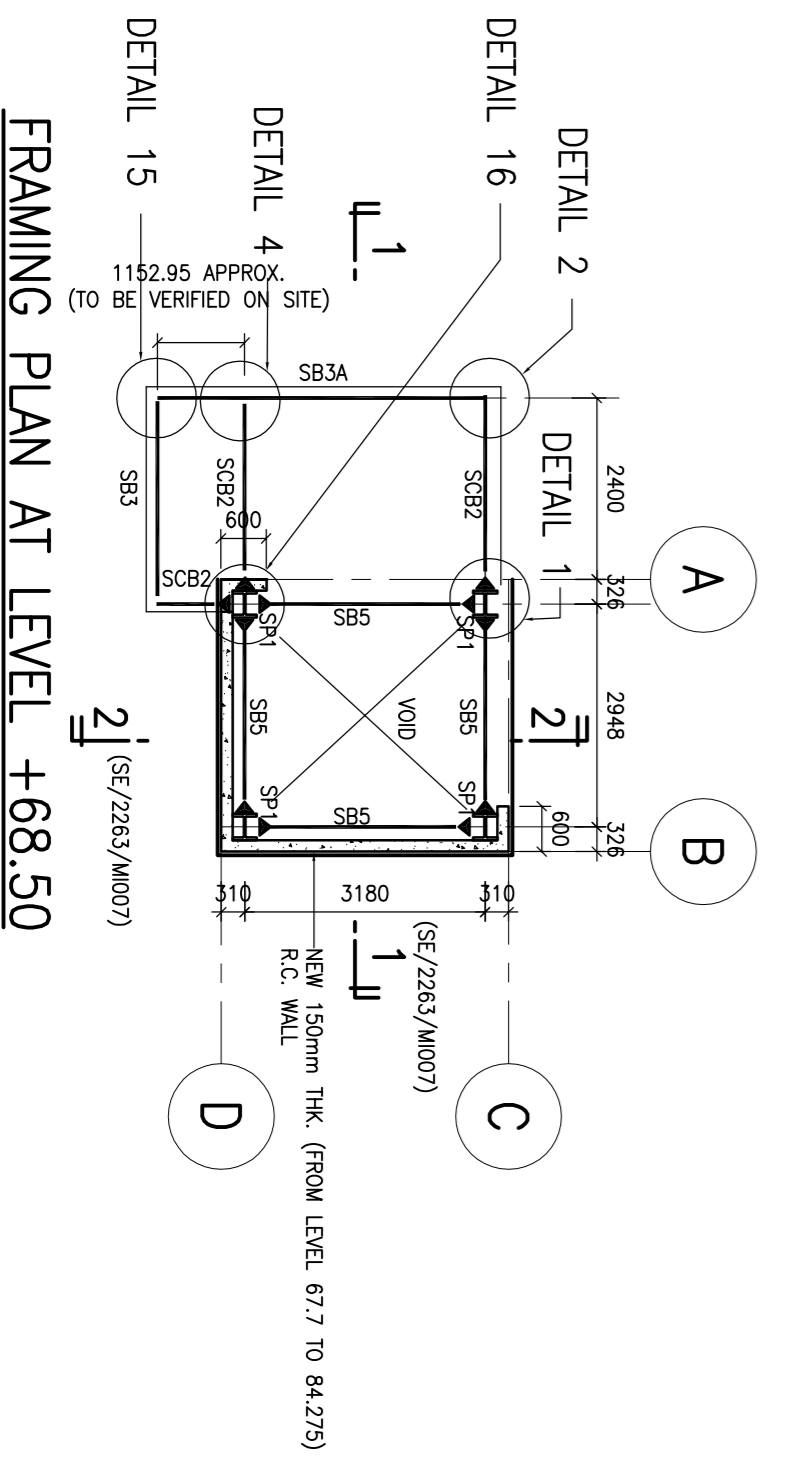


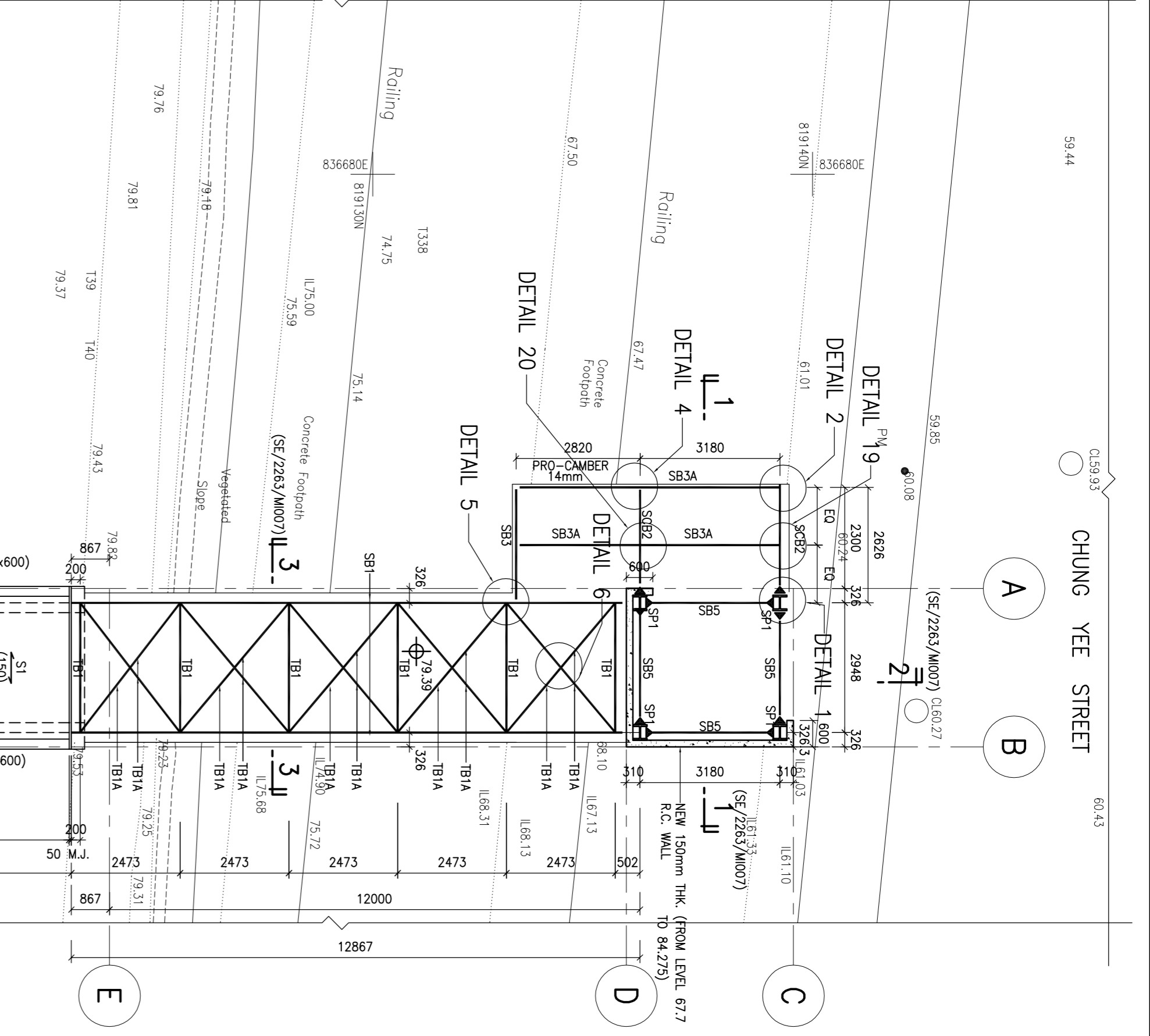
FRAMING PLAN AT LEVEL +60.30



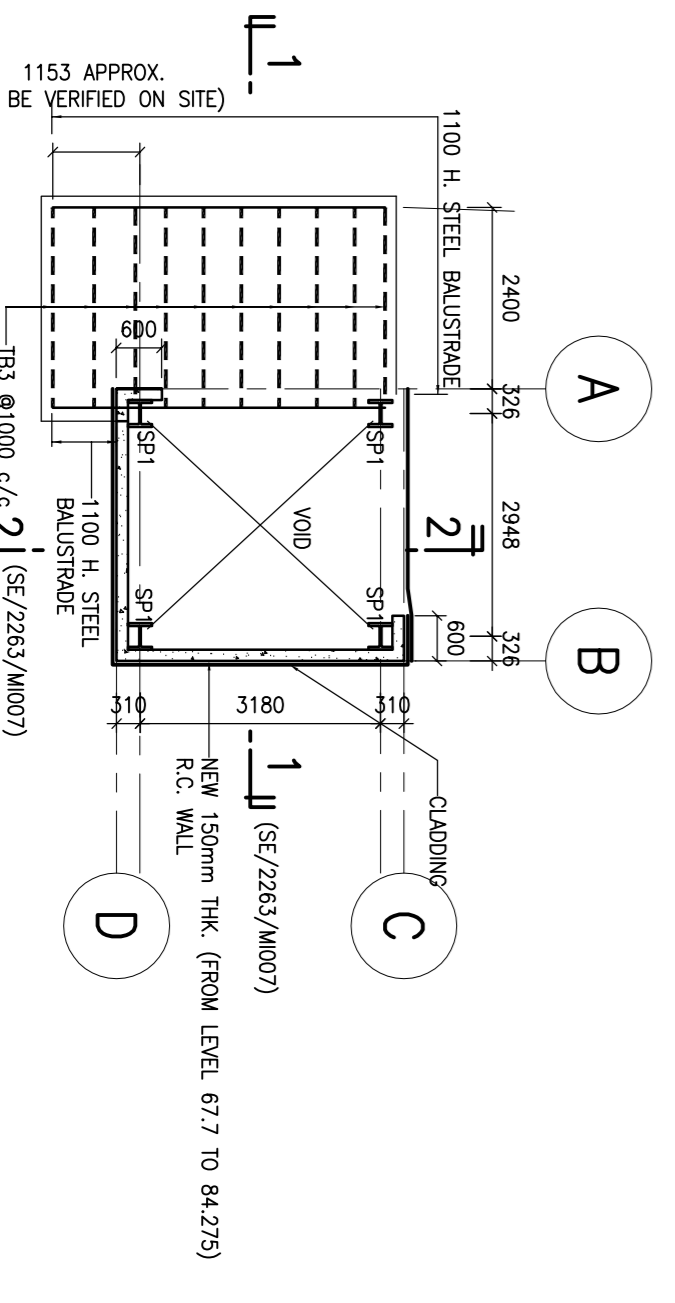
FRAMING PLAN AT LEVEL +67.70 (TOP OF CW1)



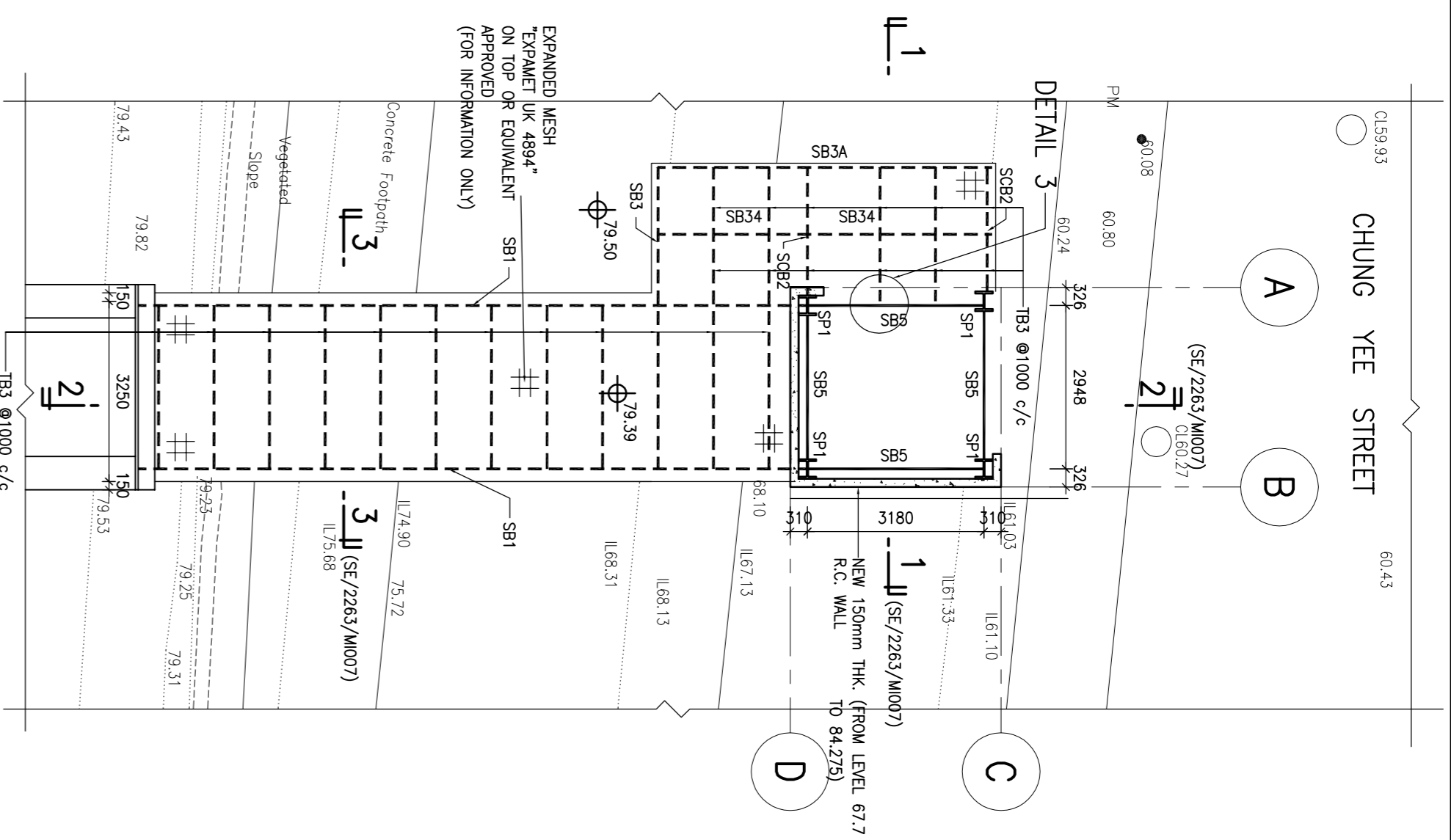
FRAMING PLAN AT LEVEL +68.50



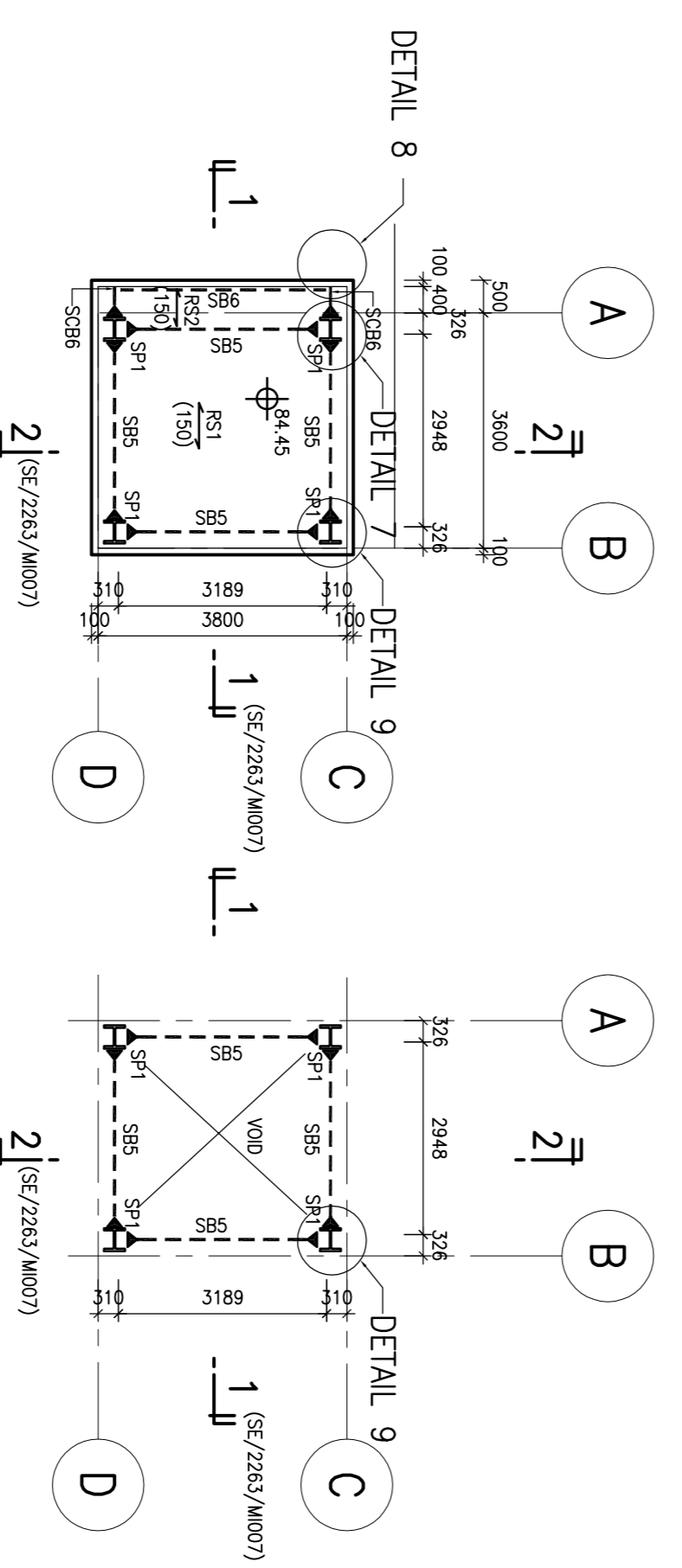
FRAMING PLAN AT LEVEL +79.39 (BOTTOM OF FOOTBRIDGE DECK)



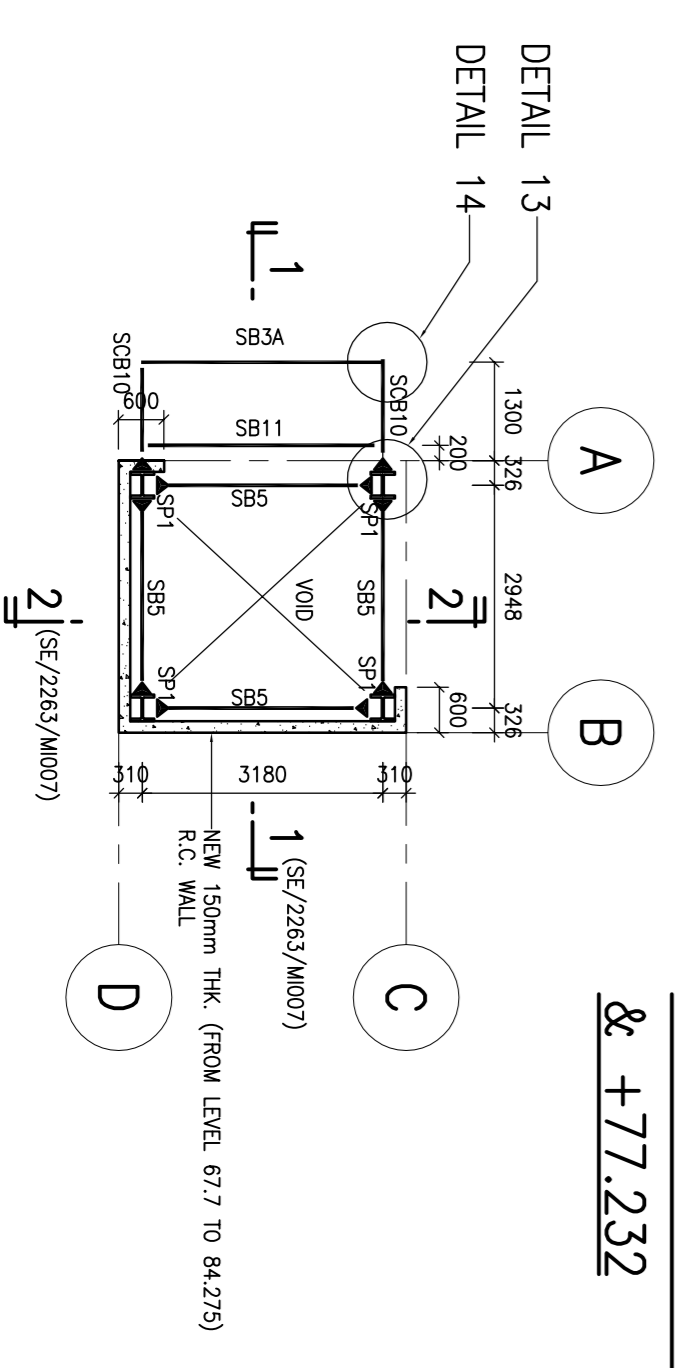
FRAMING PLAN AT LEVEL +68.50 (EMERGENCY EXIT)



TOP OF FOOTBRIDGE DECK



FRAMING PLAN AT LEVEL +84.45



FRAMING PLAN AT LEVEL +81.91

MEMBER SCHEDULE

MARK	SECTION	GRADE
SP1	305x305x137 kg/m UC	S335
SB1	886x254x140 kg/m UB	S335
SC2, SB3A	406x178x64 kg/m UB	S335
SB5	305x305x97 kg/m UC	S335
SC6, SB8, SC910, SB11	178x102x19 kg/m UB	S275
SB3	254x102x25 kg/m UB	S275
IB1	60x60x8 ANGLE	S275
TB/A	150x150x10 ANGLE	S275
TB3	152x89x16 kg/m UB	S275

LEGEND: MOMENT JOINT

TYPICAL FRAMING PLAN
BOTTOM LEVELS +71.118
& +77.232

NOTE:
GENERAL NOTES SHALL REFER TO DRAWING SE/2263/P001.

05/01/12	TENDER DRAWING	
No.	Date	Description
Revision	Date	Description
Architect	ARTHUR C. S. KWOK ARCHITECTS & ASSOCIATES LIMITED 郭定培建築師有限公司 1401 ARGYLE CENTRE ONE KOWLOON	
Engineer	TEAM 73 HK Limited 15/F, 633 KING'S ROAD, NORTH POINT, HONG KONG THOMAS ANDERSON & PARTNERS (H.K.) LIMITED CONSULTING ENGINEERS, BUILDING SERVICES	
Designed	FRANKE HUIEN	10/2009
Drawn	BAU WONG	10/2009
Checked	RICKY WONG	10/2009
Approved	Chief structural engineer Senior structural engineer Project engineer	
Contract No.	9AS0222	
File No.	8155	
Project No.	420 RD	
Contract	Contract Open SPACE AT LOCAL OPEN SPACE AT CHUNG YEE STREET, KOWLOON CITY DISTRICT	
Drawing Title	PROPOSED LIFT TOWER AND FOOTBRIDGE - FRAMING PLAN	
Drawing No.	SE/2263/NTM006	Scale 1 : 100
File Name:	ARCHITECTURAL SERVICES DEPARTMENT	

ARCHITECTURAL SERVICES DEPARTMENT

CANWEST CONSULTANTS LIMITED
建德工程顧問有限公司
15/F, 633 KING'S ROAD, NORTH POINT, HONG KONG
TEL: (852) 2882 1126
FAX: (852) 2881 6385
E-MAIL: canwest@canwest.com.hk

THOMAS ANDERSON & PARTNERS (H.K.) LIMITED
CONSULTING ENGINEERS, BUILDING SERVICES

TEAM 73 HK Limited
15/F, 633 KING'S ROAD, NORTH POINT, HONG KONG
TEL: (852) 2882 1126
FAX: (852) 2881 6385
E-MAIL: team73hk.com.hk

ARTHUR C. S. KWOK
ARCHITECTS & ASSOCIATES LIMITED
郭定培建築師有限公司
1401 ARGYLE CENTRE ONE KOWLOON