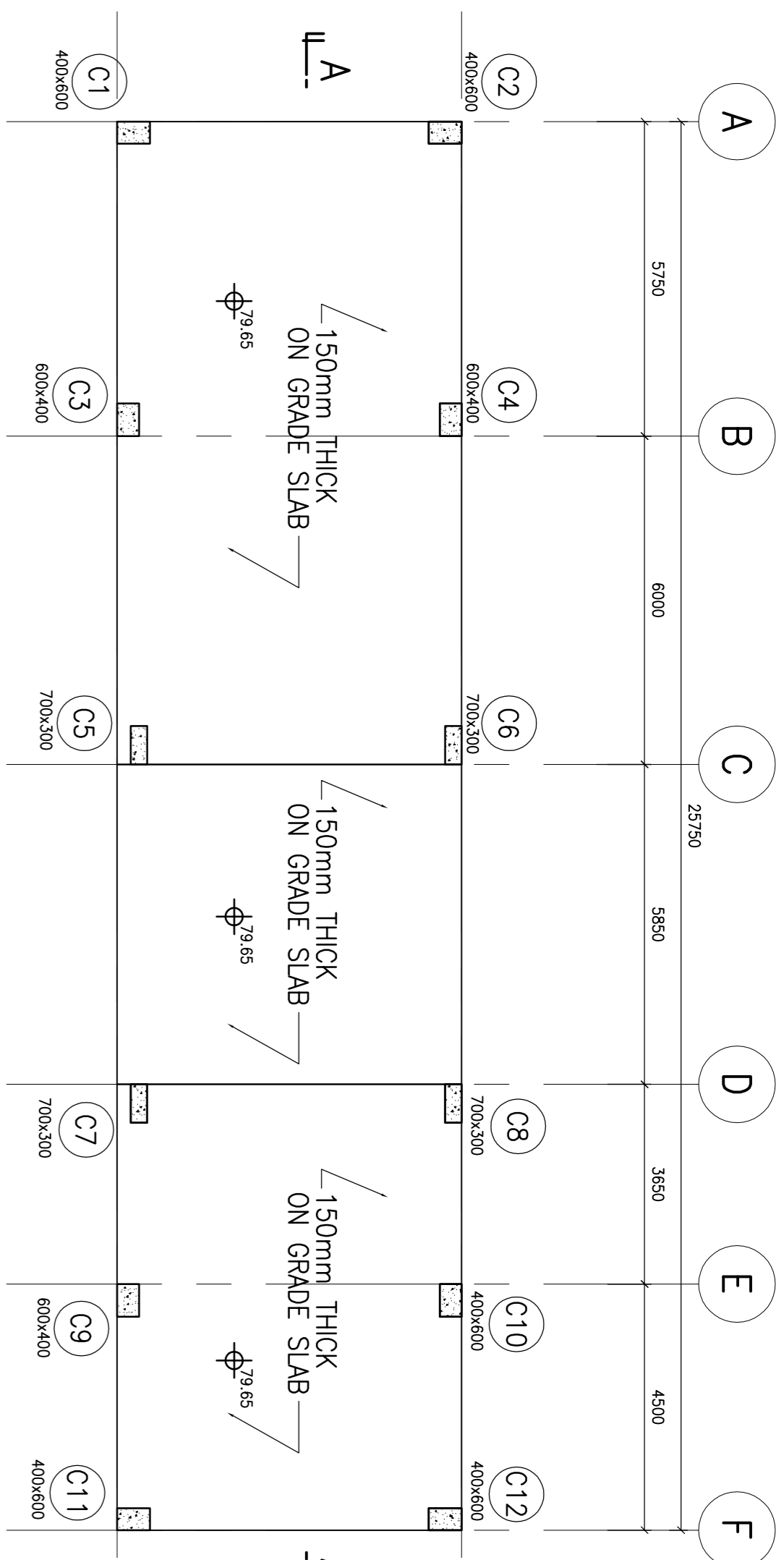
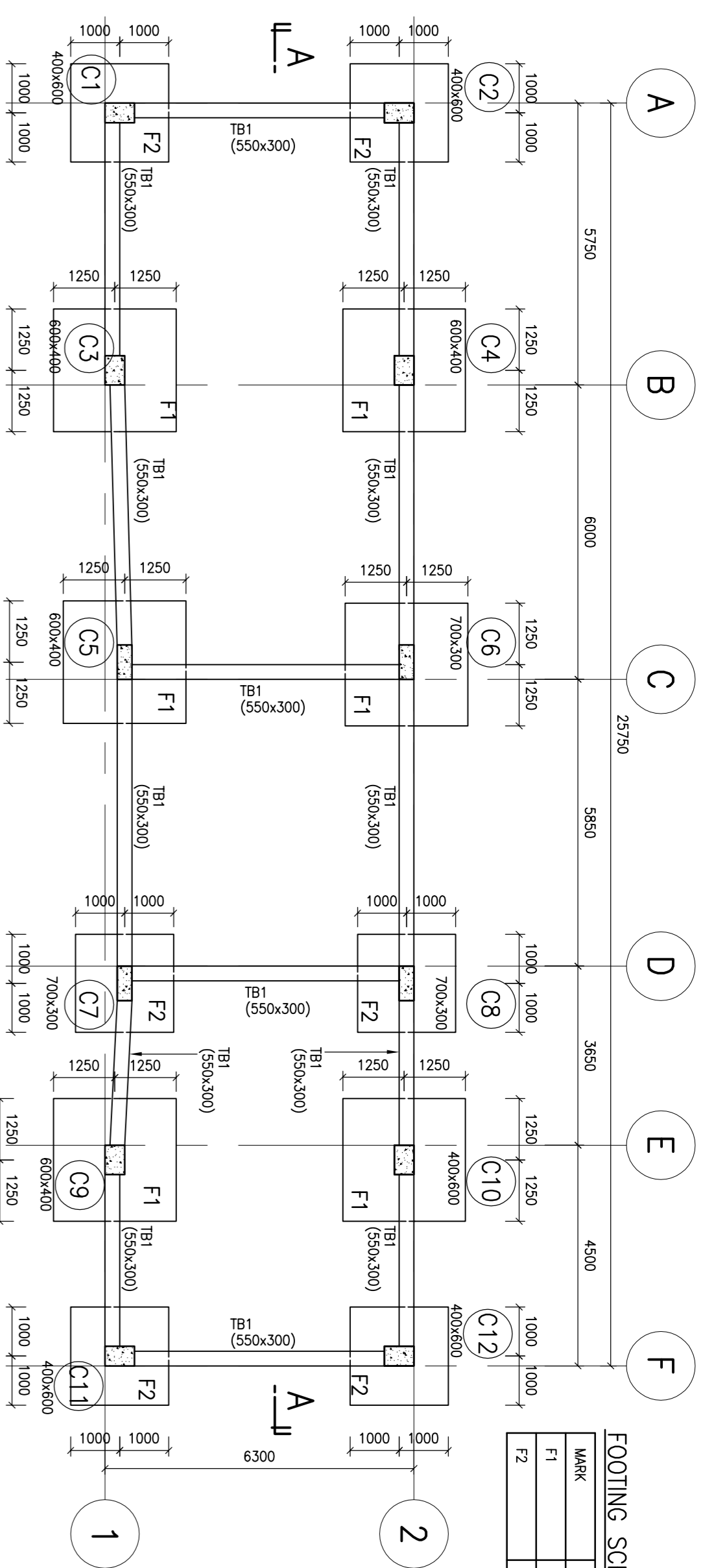


NOTE:
GENERAL NOTES SHALL REFER TO DRAWING SE/2263/1/P001.

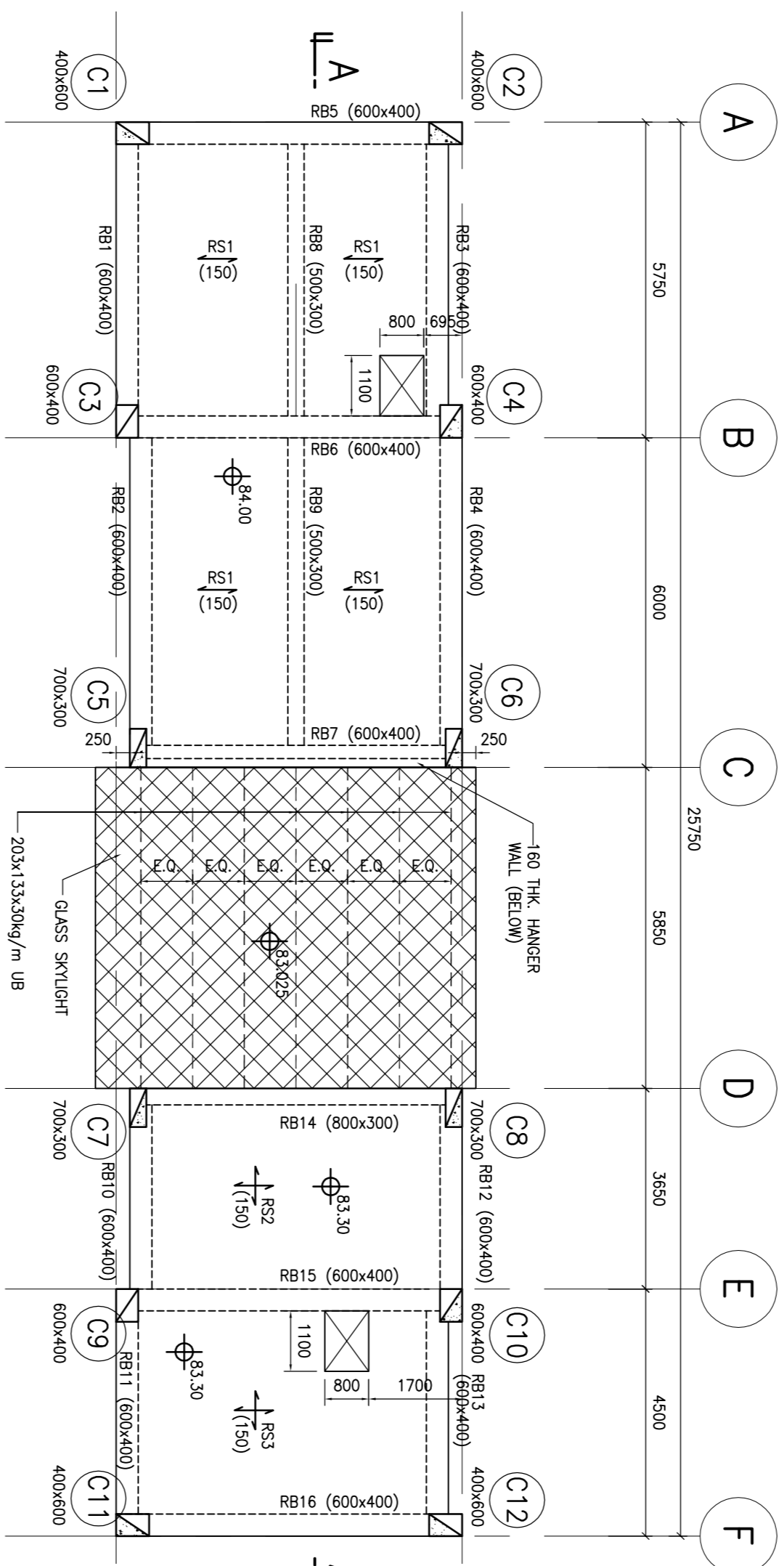


GROUND FLOOR FRAMING PLAN
L.L. = 5.470

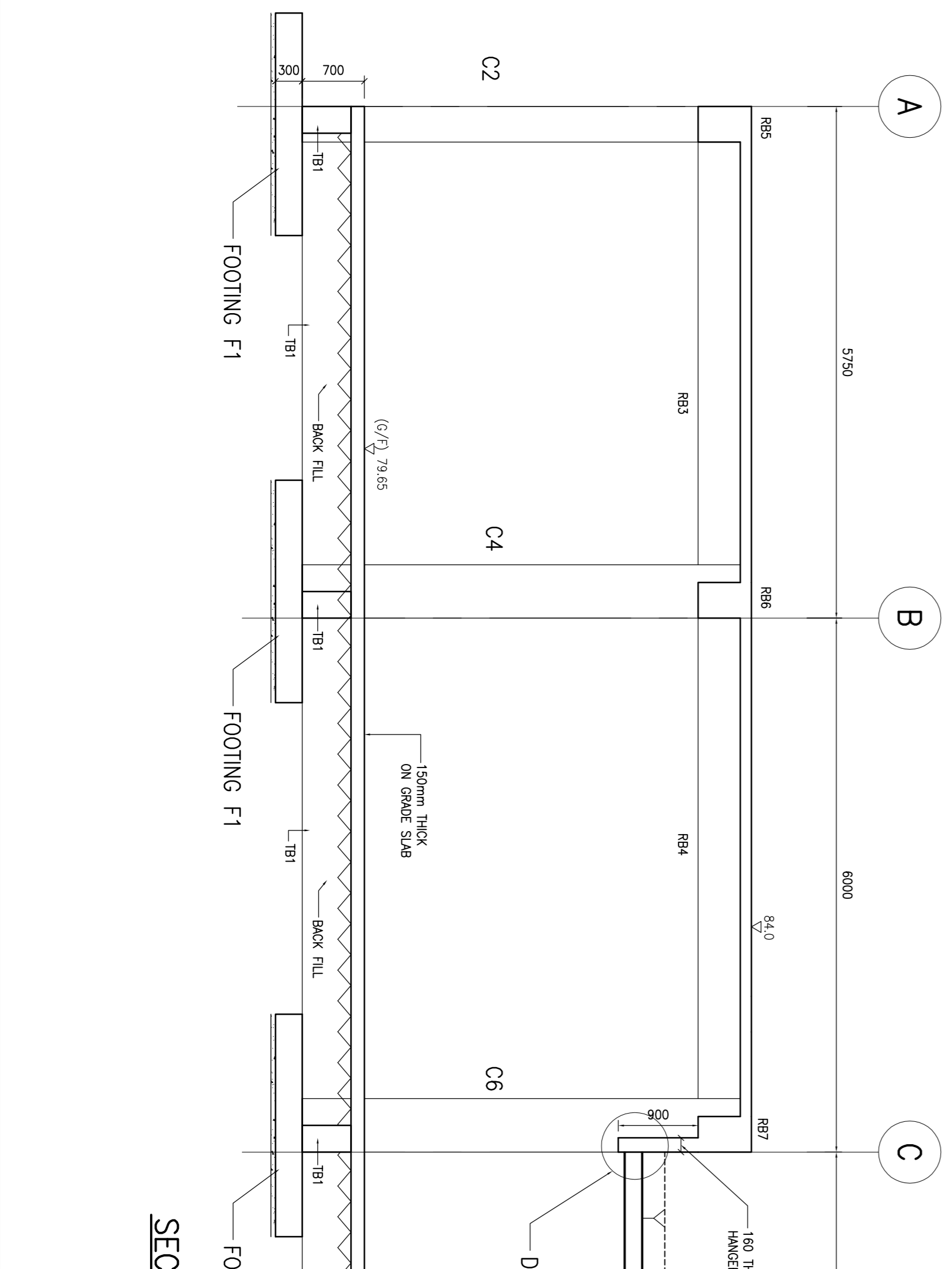
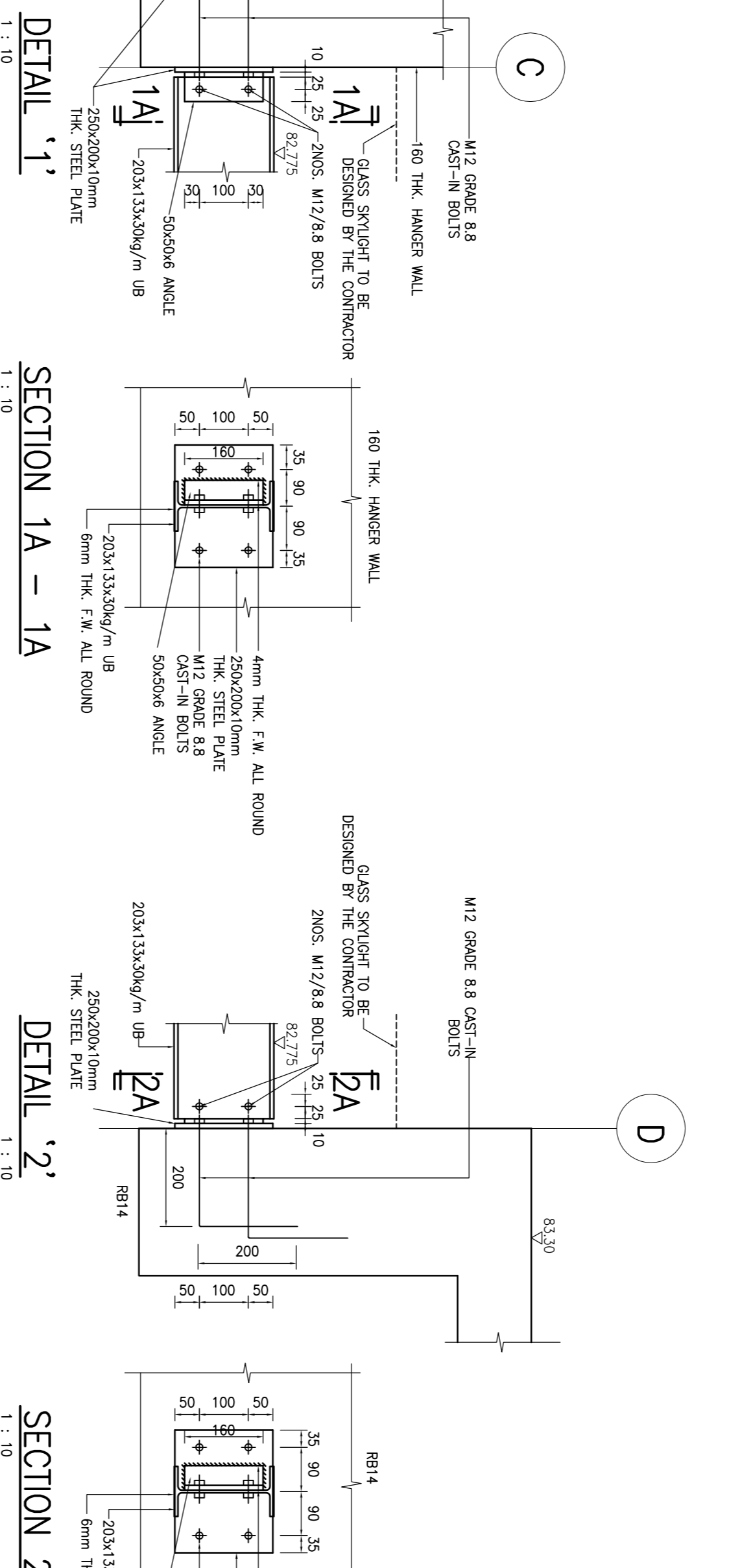


FOOTING LAYOUT PLAN

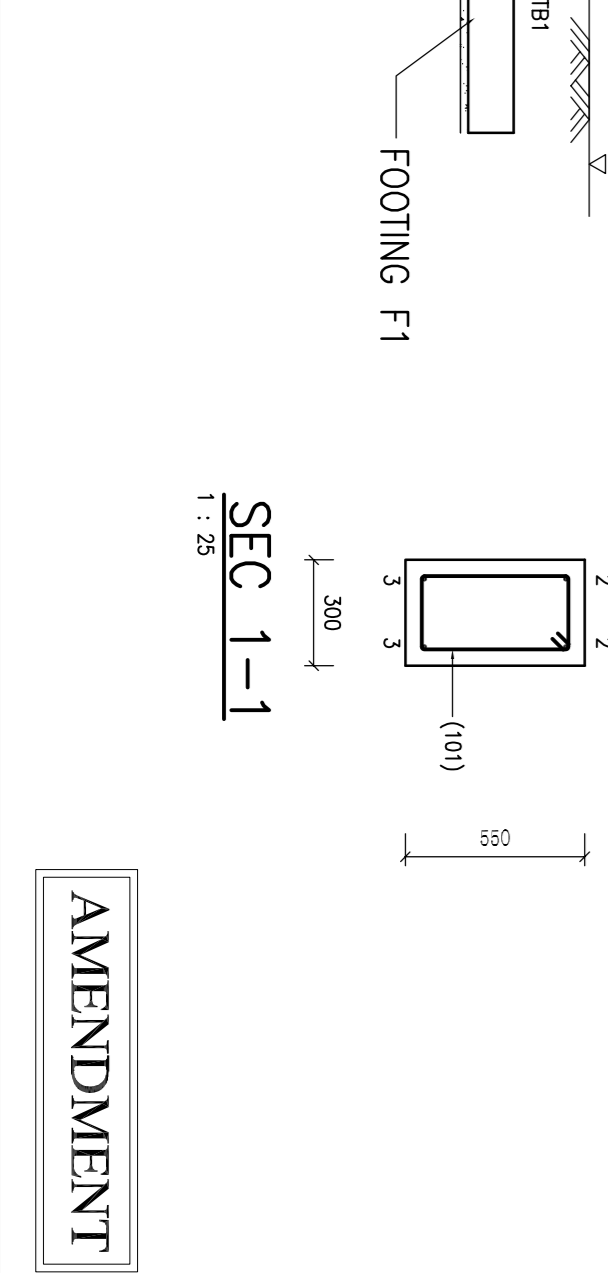
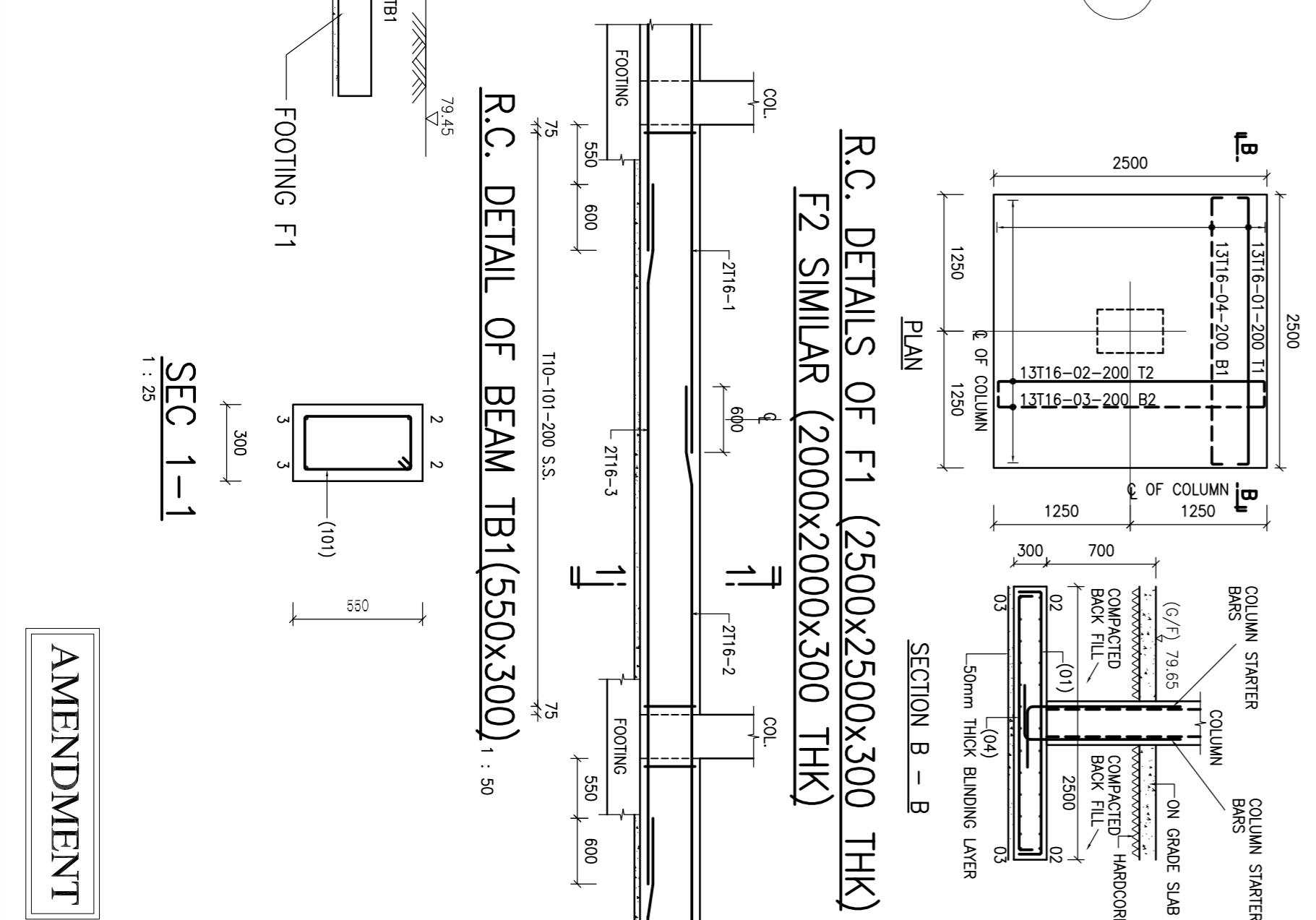
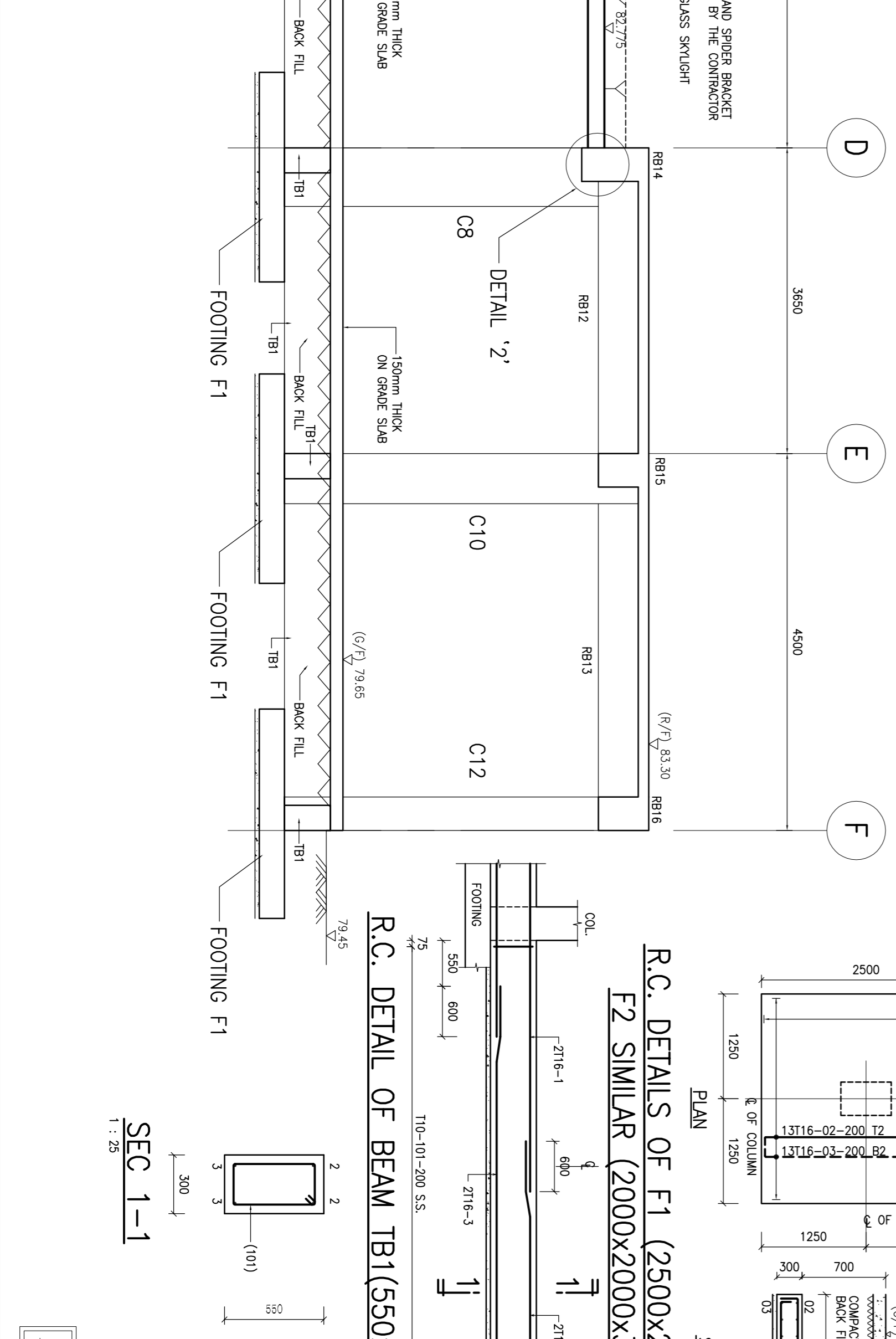
FOOTING SCHEDULE		
MARK	SIZE	
F1	2500x2500x300	
F2	2000x2000x300	



ROOF FRAMING PLAN
FINISH = 11.2.400
L.L. = 2.470



SECTION A - A



<p>Architect ARTHUR C. S. KWOK ARCHITECTS & ASSOCIATES LIMITED 郭定偉建築師有限公司 1401 ARGYLE CENTRE ONE KOWLOON</p>		<p>Engineer CANWEST CONSULTANTS LIMITED 建德工程顧問有限公司 15/F, 633 WING'S ROAD, NORTH POINT, HONG KONG TEL: (852) 2882 1126 FAX: (852) 2881 5355 E-MAIL: canwest@canwest.com.hk</p>	
<p>Architect TEAM 73 HK Limited URBAN DESIGN, INTERIOR PLANNING, INTERIOR ARCHITECTURE 7/F, One Ring Road, Sheung Wan, Hong Kong Tel: 2869 5111 Fax: 2869 4999 Email: team73@team73.com</p>		<p>Engineer THOMAS ANDERSON & PARTNERS (H.K.) LIMITED CONSULTING ENGINEERS, BUILDING SERVICES 117A, 117B (旧) 77A, 1, 4, 9</p>	
<p>Approved Chief structural engineer Senior structural engineer Project engineer</p>		<p>Checked QURENCY KIU</p>	
<p>Designed DICK LEUNG</p>		<p>Drawn BAN WING</p>	
<p>Contract No. 9AS0222</p>		<p>Project No. 420 RO</p>	
<p>Contract Open SPACE AT LOCAL OPEN SPACE AT CHUNG YEE STREET, KOWLOON CITY DISTRICT</p>		<p>Drawing Title SERVICE BLOCK FRAMING PLAN AND R.C. DETAILS</p>	
<p>Drawing No. SE/2263/NTM003</p>		<p>Scale 1 : 100</p>	
<p>File Name. XX</p>		<p>Amendment</p>	