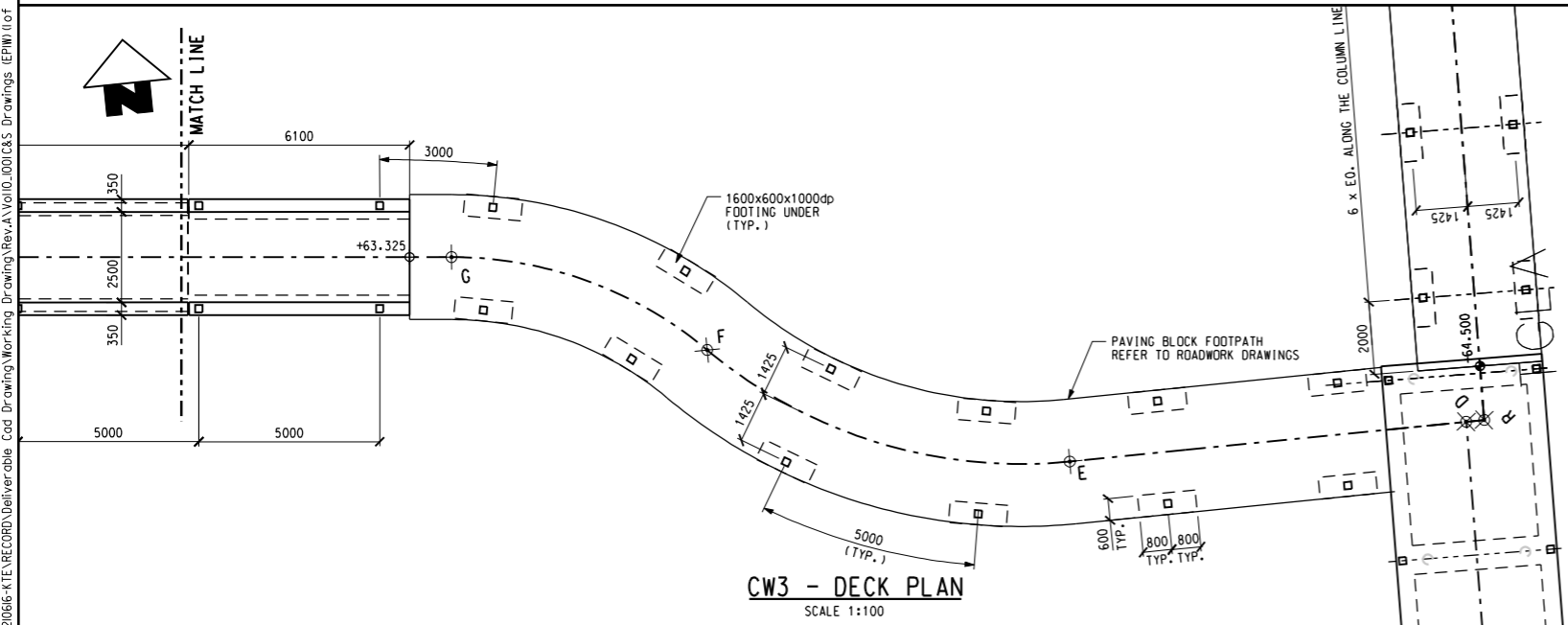
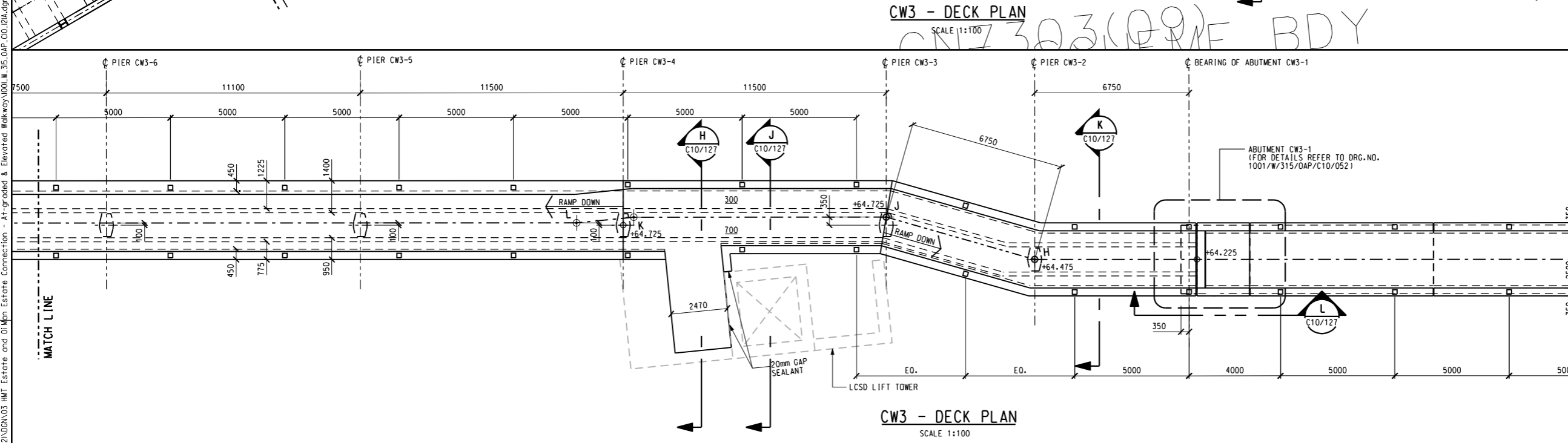
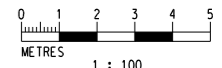


- NOTES:**
- FOR GENERAL NOTES, REFER TO DRAWING NO. 1001/W/000/OAP/C01/101 & 102.
 - STRUCTURAL LEVEL OF DECK SHALL BE AT 75mm BELOW F.F.L. U.N.D.
 - FOR SETTING OUT LINE INFORMATION REFER TO DRAWING NO. 1001/W/315/OAP/C10/005.
 - THE LAYOUT OF THE CANTILEVER LANDING OF CW3 DECK SHALL MATCH WITH THE LCSD LIFT TOWER.

- LEGEND:**
- STEEL POST 200x200x10 SHS
 - +63.325 STRUCTURAL FLOOR LEVEL (PLAN)



For Information



PLOT DRW: JA:200816-KTE-CLAD_ADMIN\PILOT_DRIVER\PDF_BW_300dpi_080924.dwt
 MODEL NAME: \X:\kms\659\data\200816-KTE\RECORD\Univerable_Cad Drawing\Working Drawing\Rev.A\100_000.C&S Drawings\EPHW (1 of 2)\DDN\03 HMT Estate and OI-Man Estate Connection - At-graded & Elevated Walkway\001.W_35_OAP_C10_121A.dgn
 FILE NAME:

REV	DESCRIPTION	BY	DATE	APPROVED	REV	DESCRIPTION	BY	DATE	APPROVED
A	WORKING DRAWING	FM	13MAY11	TS					

DRAWN	FM
DESIGNED	KC
CHECKED	NP
APPROVED	TS
DATE	23/AUG/2010

MTR

KWUN TONG LINE EXTENSION

Supported by:

- Integrated Design Associates Ltd.,
- Davis Langdon & Seah HK Ltd.,
- Kenneth Ng & Associates Ltd.,
- IntelIBuild

ARUP

CADD REF. 1001_W_315_OAP_C10_121A.dgn

TITLE		CONTRACT 1001	
		YMT TO WHAMPOA TUNNELS AND HOM STATION	
		EPIW - HMT ESTATE AND OI-MAN ESTATE CONNECTION	
		CW3 DECK LAYOUT	
SCALE	DRAWING NO.	REV.	
1 : 100 (A1)	1001/W/315/OAP/C10/121	A	